

- low cost
- low size, weight & power
- automated monitor & data logging
- industry-leading geo-location
- live, remote or autonomous operation
- intuitive, customizable interface
- open architecture, easily integrated with other sensors
- platform agnostic
- multiple mapping formats



real-time spectrum monitoring & geo-location:

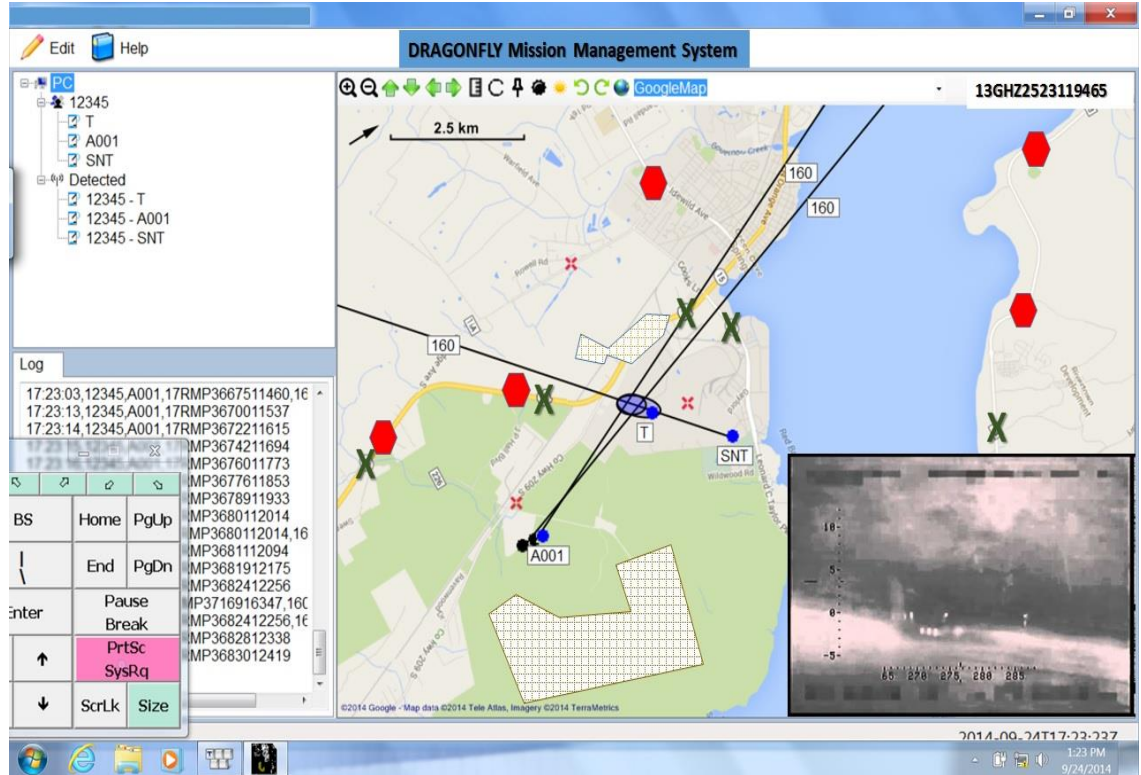
- spectrum survey, emitter identification & mapping
- search & rescue
- interference mitigation
- intrusion detection & security applications
- wildlife & fisheries management

Monitors and characterizes signals in real-time, records data for later analysis. Integrates robust mapping capabilities to efficiently identify and locate signals. Open architecture and elegant design make DRAGONFLY platform agnostic and endlessly reconfigurable to meet client needs.

MONITOR:	2MHz – 2GHz
GEOLOCATION:	100 – 500MHz
BEARING ACCURACY:	+/- 5° RMS
PAYLOAD POWER:	8W
PAYLOAD WEIGHT:	~4.5kgs



- **automated monitor, geo-location, logging & recording**
- **live, remote or autonomous operation**
- **intuitive, customizable interface**
- **open architecture, easily integrated with other sensors**
- **platform agnostic**
- **multiple mapping formats**



DRAGONFLY Mission Management System:

- intuitive, configurable user interface**
- real-time networking with other DRAGONFLY sensors**
- stream audio & technical data to other DRAGONFLY sensors**
- remotely task or operate other DRAGONFLY sensors**
- integrate imagery & other sensors**
- multiple Geospatial Information System options**

Praemittias Systems uses non-proprietary, industry standard protocols. DRAGONFLY can operate on its own Mission Management System, or port into an existing system to join a larger architecture.

A variety of communications options provide everything from local area, closed network operation to global operation of DRAGONFLY via satellite.